

# The Pathology of Rare Cancers



Angelo Paolo Dei Tos M.D.

Departments of Pathology & Oncology

Treviso, ITALY

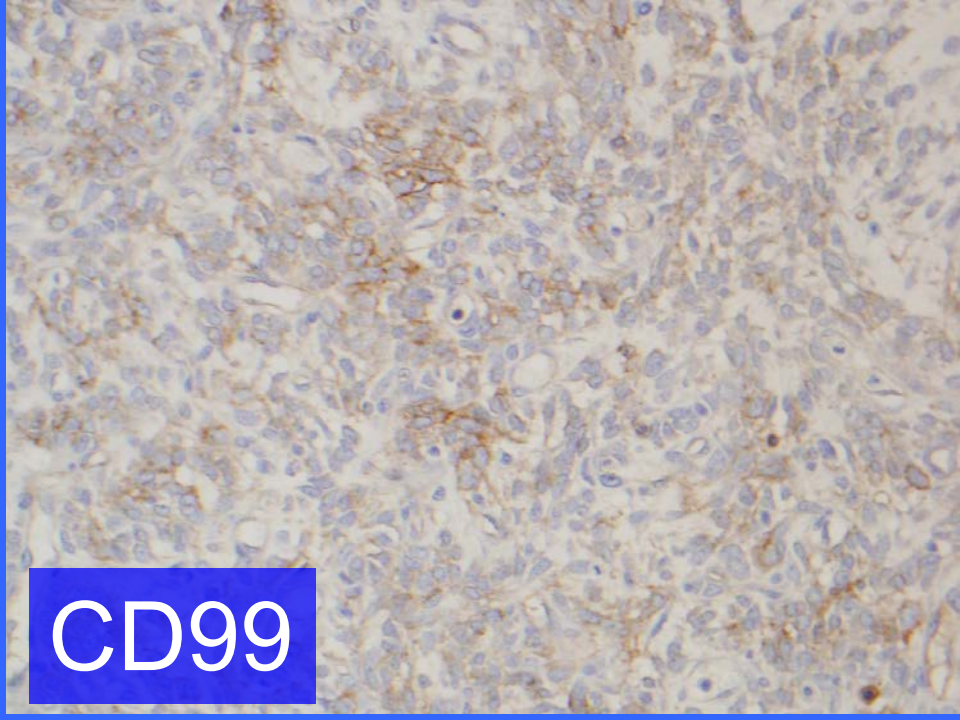
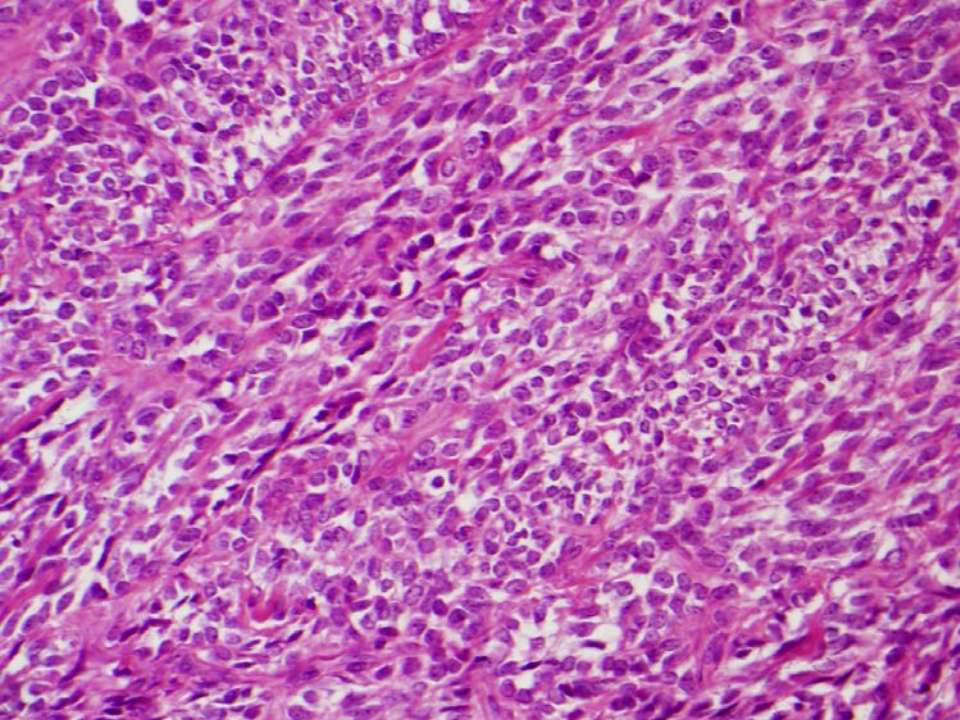
[apdeitos@ulss.tv.it](mailto:apdeitos@ulss.tv.it)

# A True Story

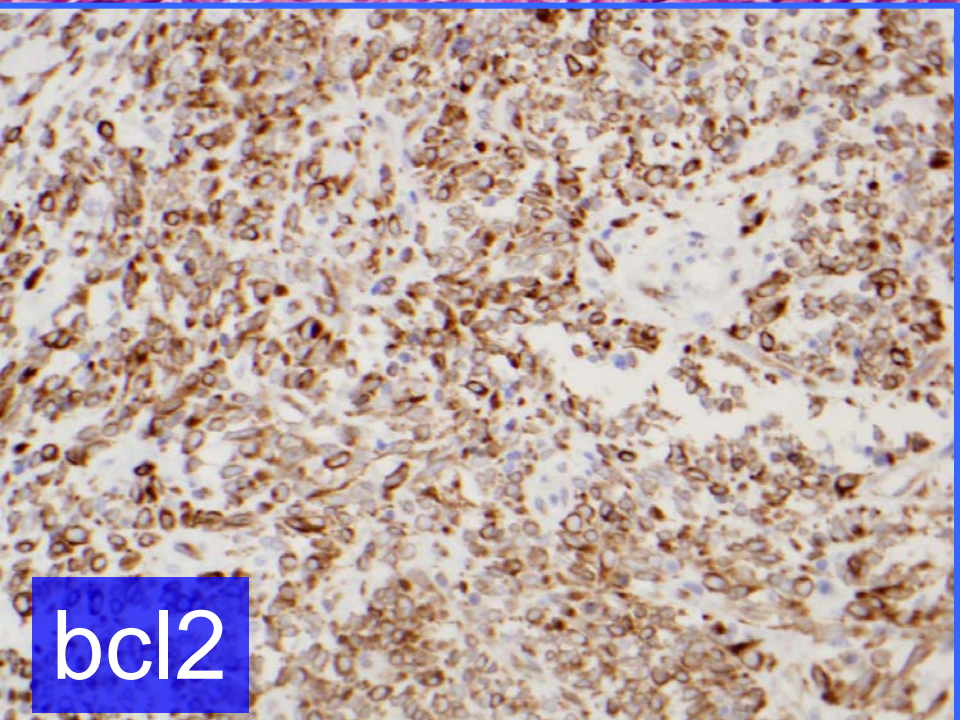
- 56 year old female
- Mass in the ileum
- Diagnosed as GIST
- Glivec
- Tumor Progression
- Dose Escalation



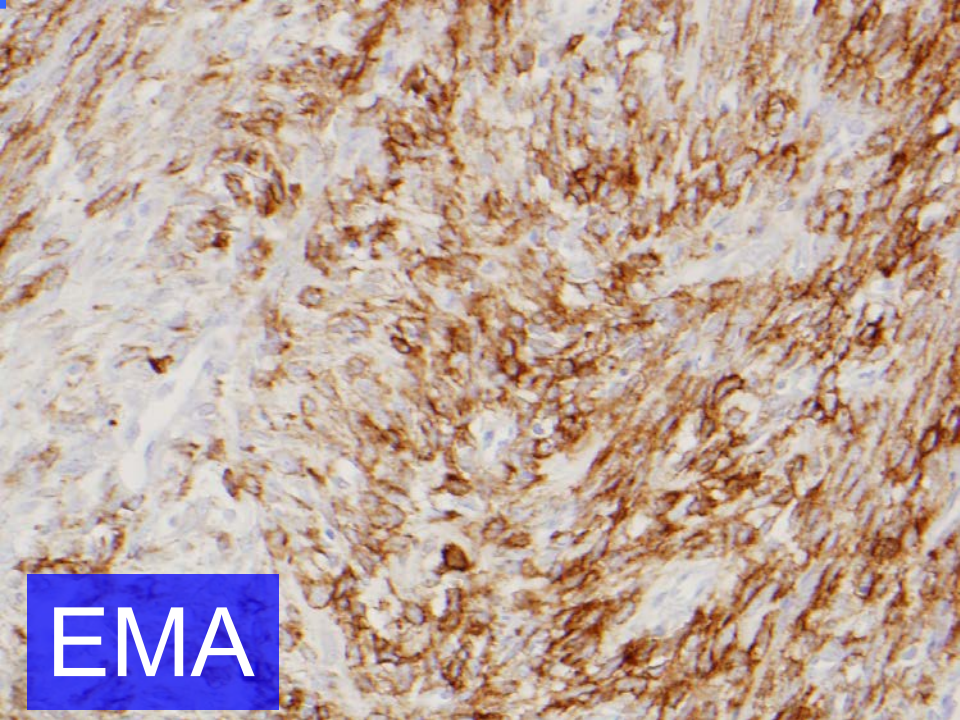




CD99



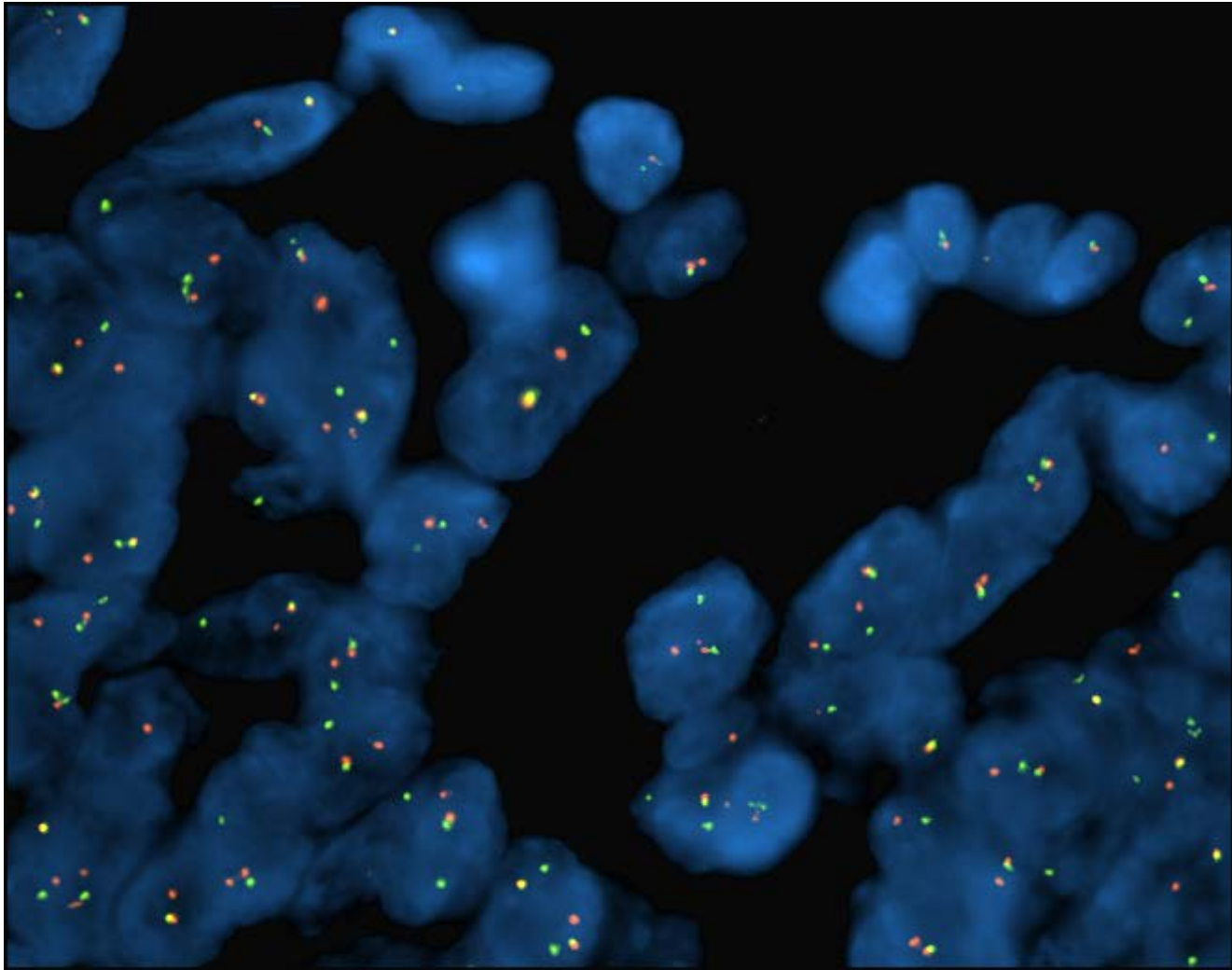
bcl2



EMA



# SYT break apart probe



# Take Home Messages

- Rare cancer diagnosis is challenging
  - Rarity
  - Intrinsic difficulties
  - Complex integration of morphology and genetics
- Significant source of inequalities
- Referral networks are the solution
- Pathology community is ready