

The Pathology of Rare Cancers



Angelo Paolo Dei Tos M.D.

Departments of Pathology & Oncology

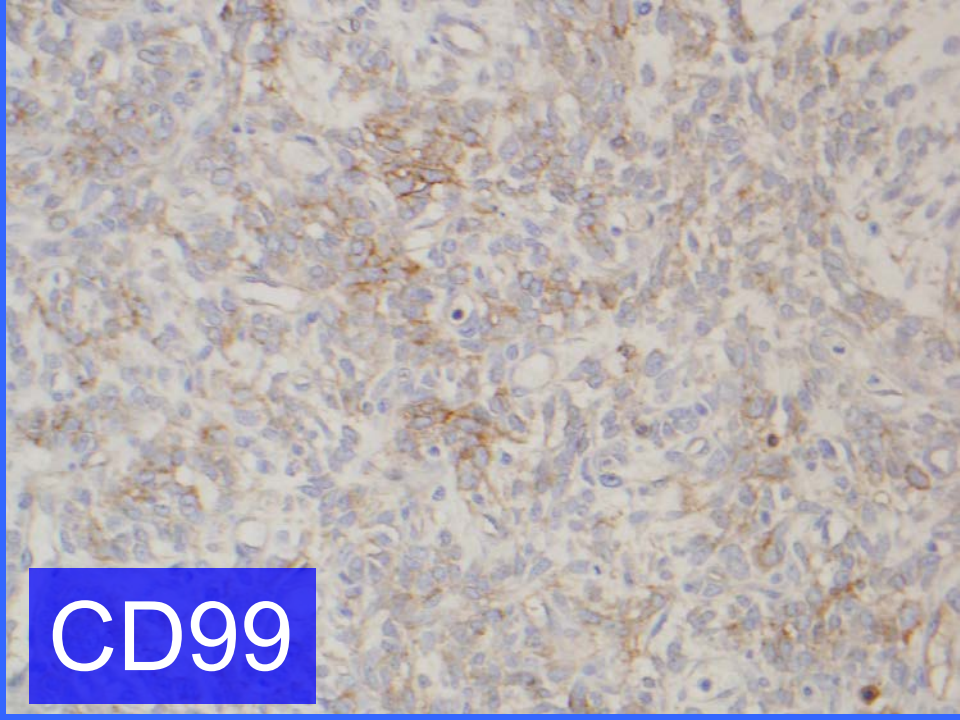
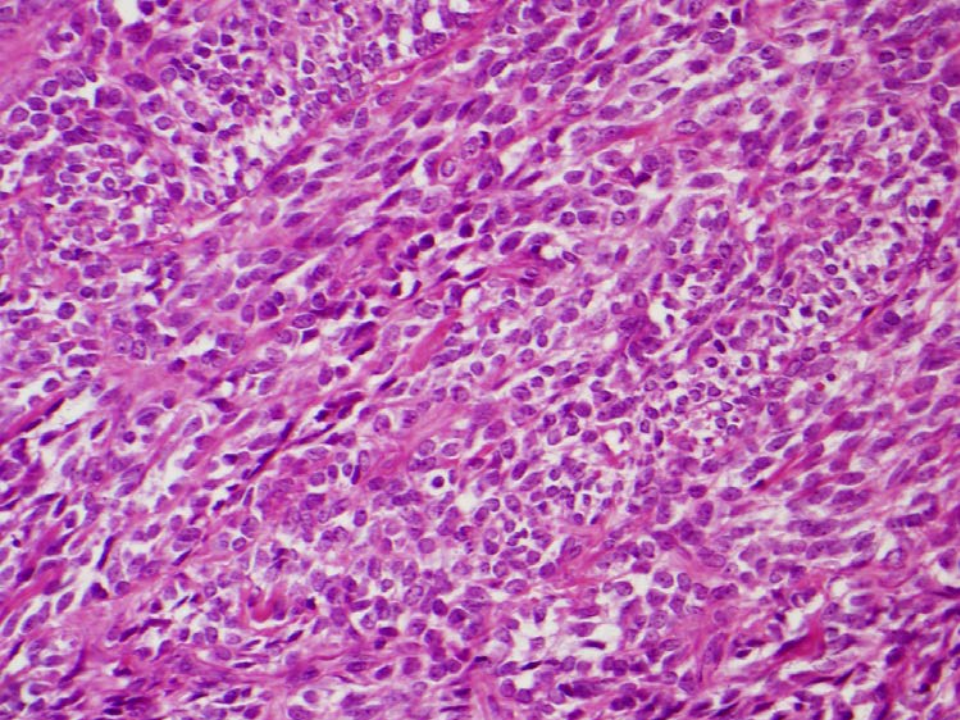
Treviso, ITALY

apdeitos@ulss.tv.it

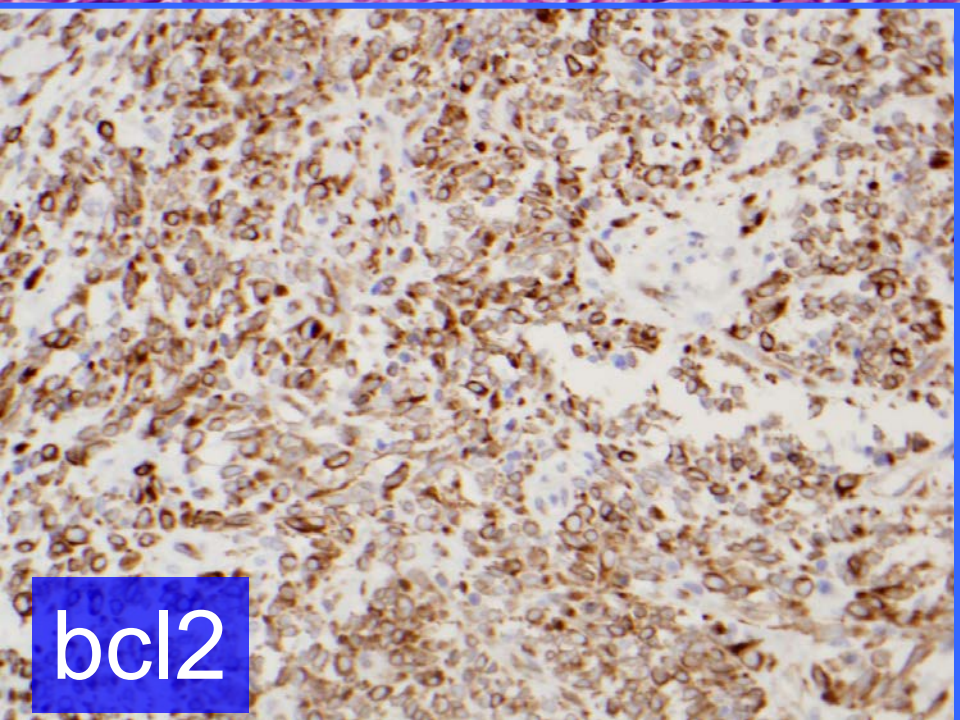
A True Story

- 56 year old female
- Mass in the ileum
- Diagnosed as GIST
- Glivec
- Tumor Progression
- Dose Escalation

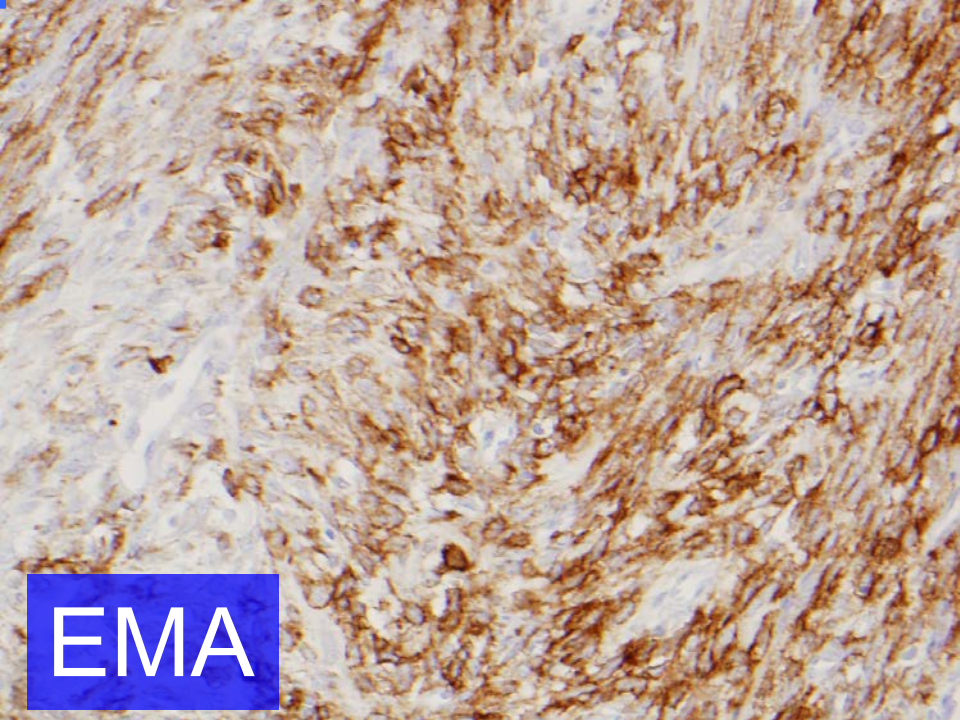




CD99

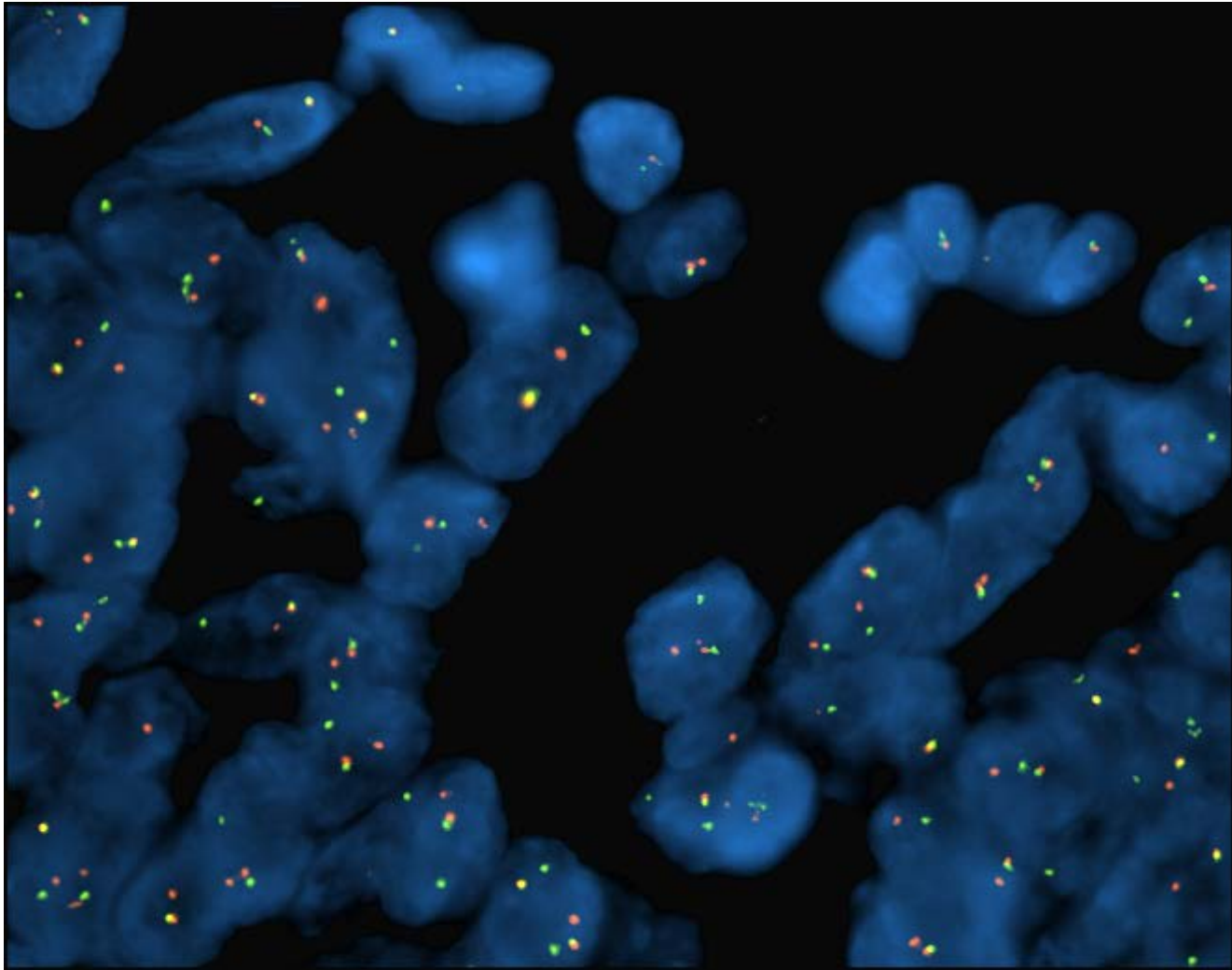


bcl2



EMA

SYT break apart probe



Take Home Messages

- Rare cancer diagnosis is challenging
 - Rarity
 - Intrinsic difficulties
 - Complex integration of morphology and genetics
- Significant source of inequalities
- Referral networks are the solution
- Pathology community is ready